

FGP 100/2 EVO

Light-oil burners two stages.

Composed by: fan at high pressurisation at reverse blades, combustion head with adjustment at high efficiency and high flame stability and hydraulic system of regulation combustive air on the two stages of flame.

Compact overall dimensions and disposition rationalized of the components with accessibility facilitated for operations of setting and maintenance.

Complete of nozzle, flexible pipes and line filter.

Complete of flange and gasket for installation on generator.

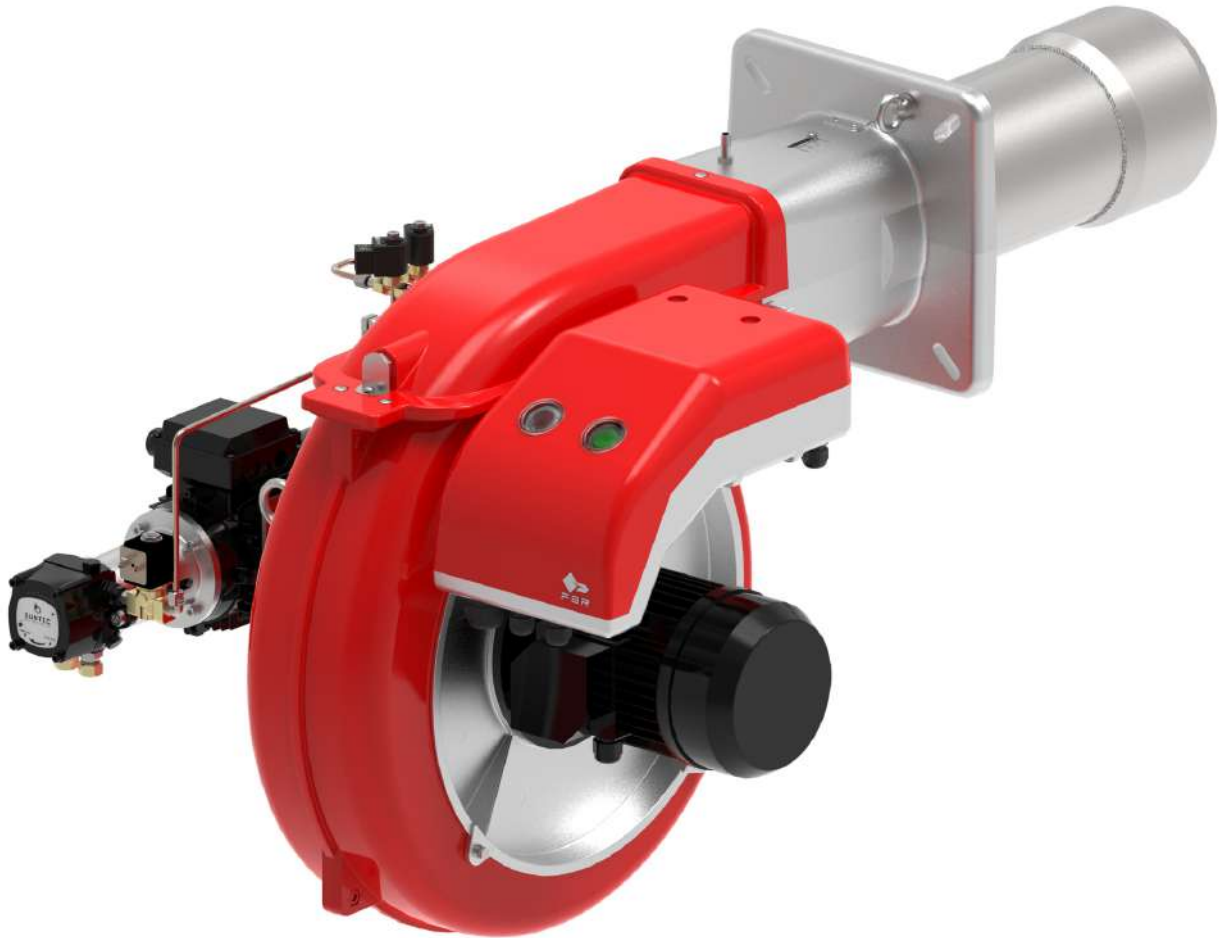


Fig. 1 FGP 100/2 EVO

TECHNICAL DATA FGP 100/2 EVO

MODEL		FGP 100/2 EVO
Flow min. 1°st. / min. 2°st. - max. 2°st. *	[kg/h]	21.8/40-100
Thermal power min. 1°st. / min. 2°st. -max. 2°st. *	[Mcal/h]	222.4/408-1020
Thermal power min. 1°st. / min. 2°st. -max. 2°st. *	[kW]	258.6/474.4-1186
Fuel: LIGHT-OIL 1.5°E at 20°C = 6.2 cSt = 35 sec Redwood N°1		
Intermittent working operation (min. 1 stop every 24 hours) two stages		
Environmental conditions operation/storage:	-15...+40°C / -20...+70°C, rel. humidity max. 80%	
Max temperature combustion air	[°C]	60
Nominal electric power	[kW]	2.1
Fan motor	[kW]	1.5
Pump motor	[kW]	0.37
Nominal fan motor current absorption	[A]	3.3
Nominal pump motor current absorption	[A]	1.2
Nominal auxiliary absorption	[A]	0.82
Power supply:	3~400V, 1N~230V - 50Hz	
Electric protection degree:	IP 40	
Noisiness ** min-max	[dB(A)]	82-83.6
Burner weight ***	[kg]	52

* Reference conditions:Environment temperature 20°C - Barometric pressure 1013 mbars - Altitude 0 metre (sea level).

** Measured sonorous pressure in the combustion lab, with functional burner on beta boiler in a distance of 1 m (UNI EN ISO 3746).

*** For burner with long head add 2 kg.

OPERATING RANGE DIAGRAM FGP 100/2 EVO

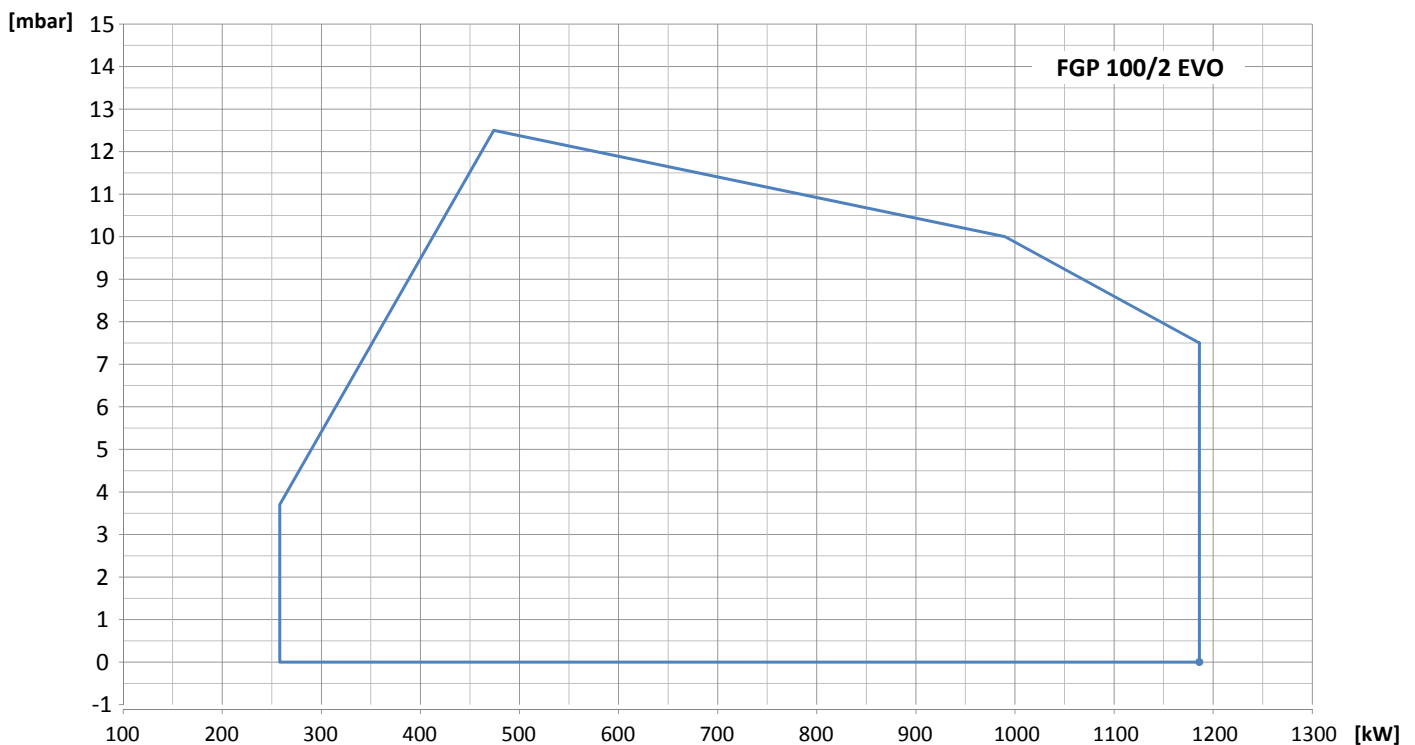


Fig. 2 X = Thermal power Y = Pression in the combustion chamber

The firing rates has been obtained based on test boilers in accordance with EN267 standards and are indicative of matching the burner to the boiler. For the correct operation of the burner, combustion chamber dimensions must be in accordance with current regulation. In case of non-compliance, contact the manufacturer.



FBR

DIMENSIONS [MM]

LIGHT-OIL BURNERS TWO STAGES

SK070084_B_en

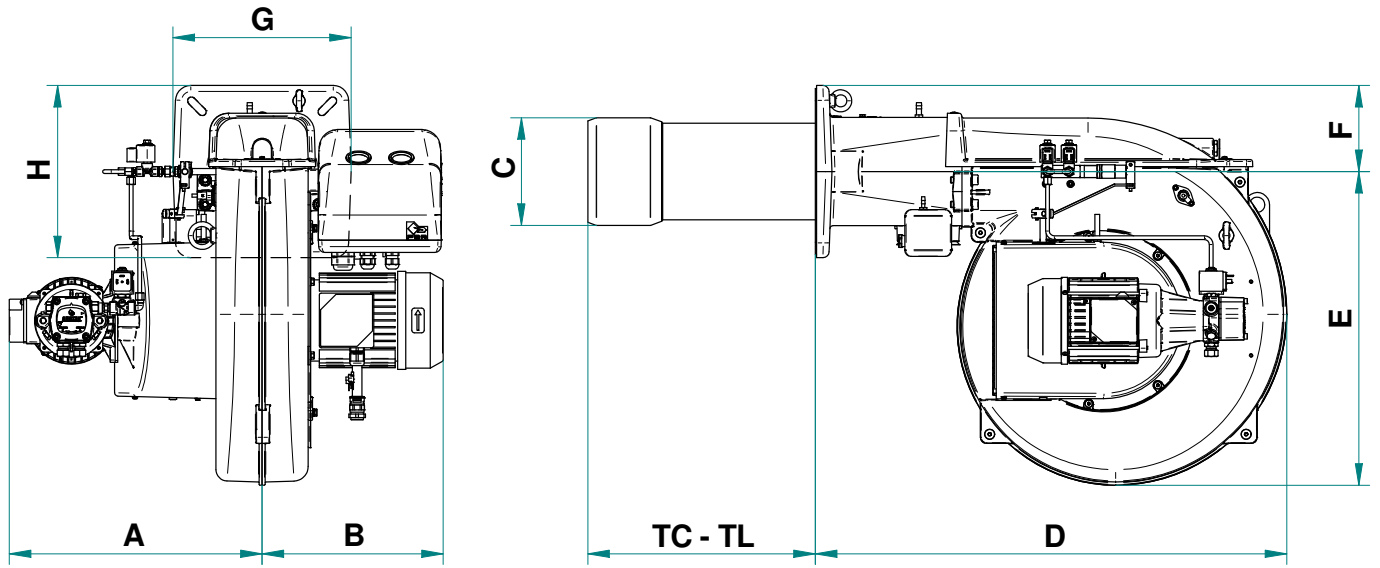
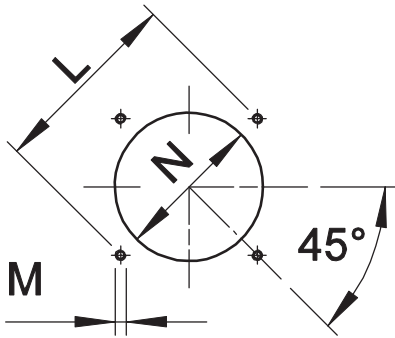


Fig. 3 Dimensions FGP 100/2 EVO

MODEL	A	B	C	D	E	F	G	H
FGP 100/2 EVO	411	294,5	175	766,5	510	140	290	280

* see "flame tube length"



* Suggested dimension of connection between burner and generator.

Fig. 4 Boiler plate

MODEL		L min	L max	M	N min	N *	N max
FGP 100/2 EVO	mm	275	325	M10	185	185	220

FLAME TUBE LENGTH

Flame tube length must be selected based on the specifications supplied by boiler manufacturer and, in any case, it must be greater than the thickness of the boiler door included its insulation.

In case of boilers with flame inversion or front flue combustion chambers, it is necessary to insulate the area between the flame tube and front door with refractory material. This protection material must not impede flame tube extraction.

MODEL		TC	TL **
FGP 100/2 EVO	mm	235	370

** For different flame lengths, please contact our Technical-Sales Department.

BURNER SIGNAL DESCRIPTION

In the picture below there are indicated all the signalation present on the burner:

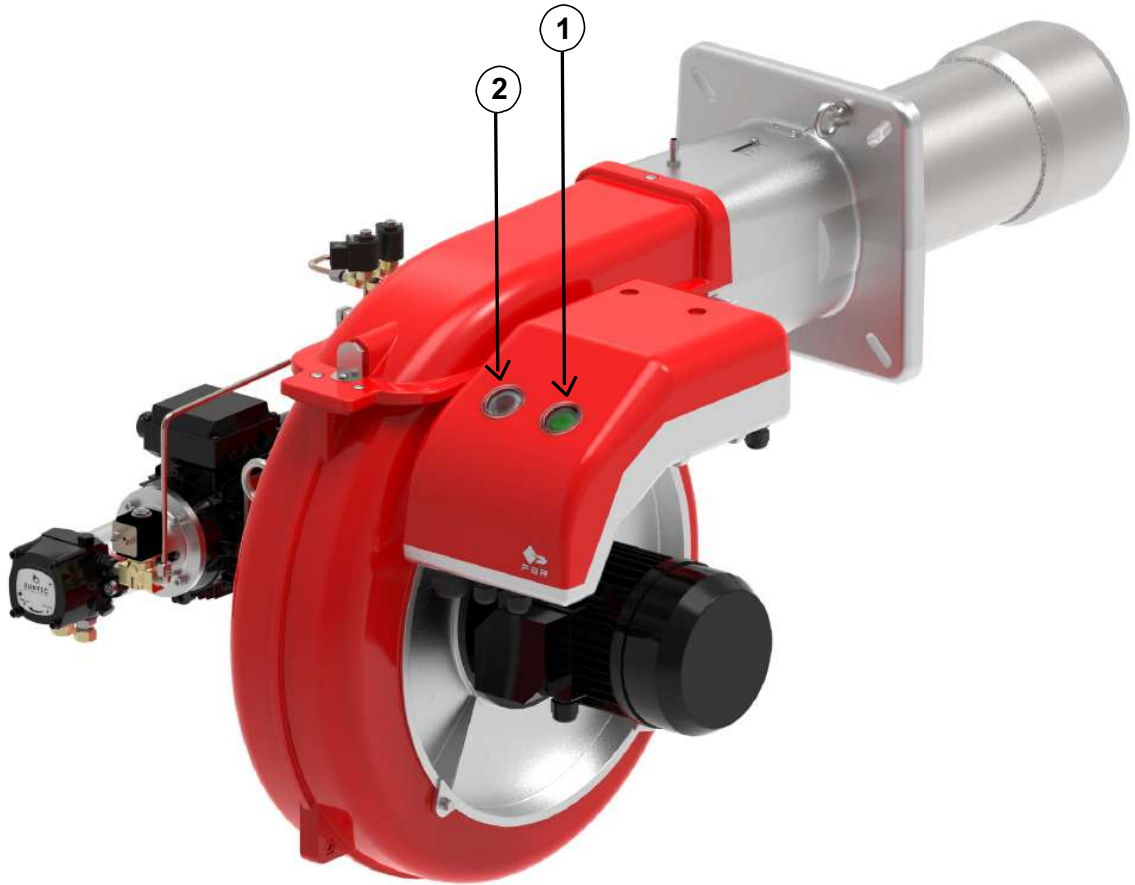


Fig. 5 Burner signal description

LEGEND

- 1) ON/OFF button
- 2) Reset from lockout button + status lamp

💡 The multicolor signal lamp in the lockout reset button (pos.2) is the key indicating element for visual diagnostics and interface diagnostics.

In normal operation, the different operating states are indicated in the form of color codes; please refer to electrical device handbook supplied with the present instructions.

💡 After a non-alterable lockout, the red signal lamp in the lockout reset button (pos.2) lights up. By pressing the lockout reset button (pos.2) for more than 3 seconds, the visual diagnostics of the cause of fault can be activated; please refer to electrical device handbook supplied with the present instructions.

For close the diagnostics mode and for switch on the burner again, it is necessary to reset the burner control. Press the lockout reset button (pos.2) for about 1 second (<3 seconds).

💡 After a non-alterable lockout, the red signal lamp in the lockout reset button (pos.2) lights up. For reset the control box press the lockout reset button (pos.2) for about 1 second (<3 seconds).

PRODUCT SPECIFICATION

SHORT DESCRIPTION

Light-oil burners two stages.

DETAILED SPECIFICATION

Light-oil burner two stages composed by:

- Fan at high pressurisation at reverse blades;
- Combustion head with adjustment at high performance and elevated flame stability;
- Flange and insulating gasket for fixing at boiler;
- Three-phase power supply;
- Photodiode for flame detection;
- IP 40 electric protection level;
- Safety air pressure switch to stop the burner in lock-out (by stopping the pump motor) in case of failed or anomalous fan operation;
- Dedicated motor for the activation of the light-oil pump.

CONFORMING TO:

- CE rules;
- 2014/30/UE Directive E.M.C.;
- 2014/35/UE Directive L.V.;
- 2006/42/CE - 2006/42/EG - 2006/42/EC Directive M.D.;
- Directive PED 2014/68/UE (ART.4,PAR.3);
- Reference rules: EN267 (liquid fuel) - EN746-2 (industrial thermoprocessing equipment).

STANDARD EQUIPMENT

- Flexible hoses for connection;
- Line filter;
- Isomart gasket;
- Nozzle;
- Flange with insulating gasket;
- Burner nameplate;
- Warranty;
- Instruction handbook for installation, use and maintenance.

OPTIONAL

- Noise protection.